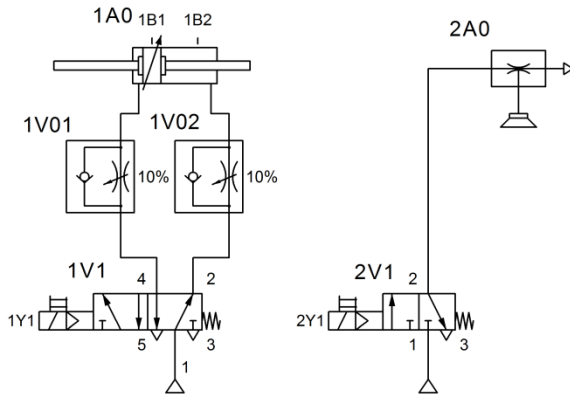


Úloha č.6 Elektropneumatický dopravník



Designation	Description
1V02	Cylinder, Double-acting, with in and out Piston Rod
	Sucker
2A0	Vacuum suction nozzle
2V1	3/2-way solenoid valve
1V1	5/2-way solenoid valve
1V01	One-way flow control valve
1V02	One-way flow control valve
	FluidSIM Input Port
	Electrical connection 0V
	Electrical connection 24V
	Distance rule
1B1	Magnetic proximity switch
1B2	Magnetic proximity switch
	FluidSIM Output Port
1Y1	Valve solenoid
2Y1	Valve solenoid
	Compressed air supply
	Compressed air supply
B1	Optical proximity switch

